

**SUB ASSY 02**  
**V60 DOUBLE CENTRE POSTS**  
 QTY - 1

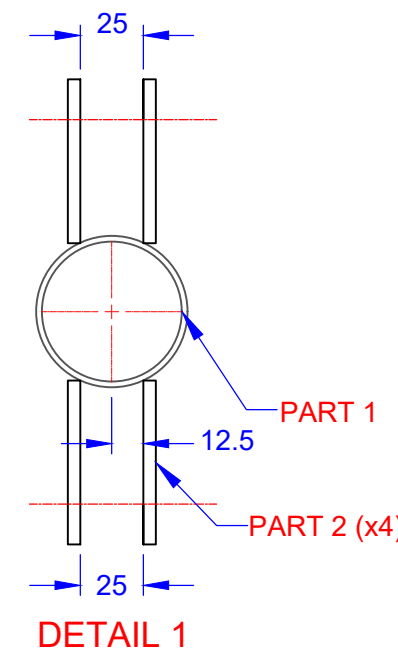
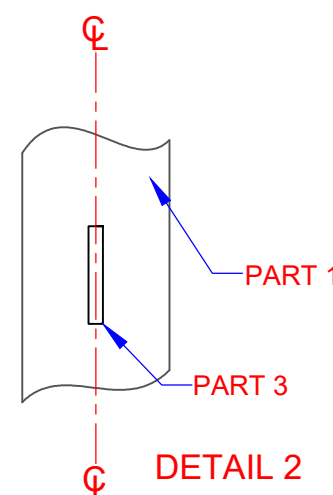
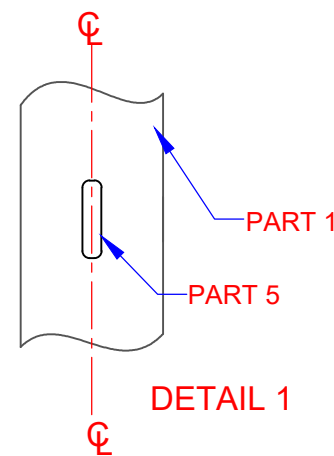
SEE  
 DETAIL 1

SEE  
 DETAIL 2

SEE  
 DETAIL 2

**NOTE: TECH SCREWS TO BE PLACED DURING THE FABRICATION PROCESS USE A 68 OD X 3 MM PVC TO CHECK FOR FIT**

**2 X 3 MM HOLES FOR PAN HEAD TEC SCREWS, TO SUIT 68 X 3 MM PVC SLEEVE**



**PARTS DETAILS**

PART	QTY	MATERIAL	LENGTH	TOTAL
1	1	60.3 OD X 2.3 CHS GAL	2710 MM	2710 MM
2	4	65 X 5MM LASER CUT PLATE	320 MM	1280 MM
3	4	6MM CRIMP WIRE (40 MM WAVE)	40 MM	160 MM
4	1	K50 ROUND POST CAP	-	-
5	2	M8 CHAIN LINK	-	-
-	2	PAN HEAD TECH SCREWS	-	-

**NOTE:**  
 SUB ASSY 02 - V60 DOUBLE CENTRE POST IS REQUIRED ONLY FOR V60 DOUBLE POSTS.  
 TO BE FABRICATED ONLY IF CLEARLY SPECIFIED ON THE PRODUCTION JOB CARD

TITLE: <b>V60 DOUBLE VOLLEYBALL POSTS</b>	
DRAWN BY: UMESH	DRAWING NUMBER: SUB ASSY 02 - CENTRE POST
CHECKED BY: UMESH	
DATE: 13/02/2023	<b>A3</b>



Oz Ring Pty Ltd  
 Trading as:  
**Play Hard Sports Equipment**  
 ABN 79 066 094 559  
 24 Ern Harley Drive  
 Burleigh Heads Qld 4220  
 Phone: (07) 5593 4494  
 Fax: (07) 5593 4338  
 Website: [www.playhardsports.com.au](http://www.playhardsports.com.au)  
 Email: [email@playhardsports.com.au](mailto:email@playhardsports.com.au)